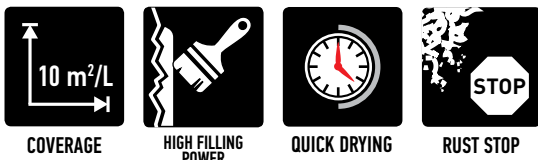


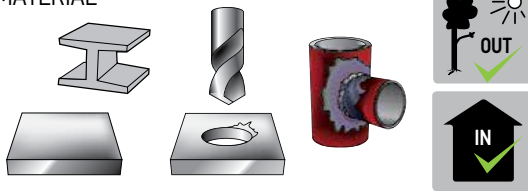


ZINC BRUSHABLE



ZINC BRUSHABLE is quick-drying and durable anti-corrosive agent for any metal, particularly for protecting welding seams, drilling holes and other areas for metal corrosion. Suitable for any metal repair, for instance fixing damaged zinc surfaces, covering drilling and welding points or any anti-corrosive applications. Not to be overpainted with alkyd paints. Available in two versions; dark grey zinc for cold galvanized metals and alu-zinc for electric galvanized metals.

MATERIAL



Mix the paint properly before use! A zinc coating can be applied using a brush, roller or electrical paint gun. Thinning and tool cleaner: Maston xylene. Drying times (+23 °C): dust-dry in ca 15 min, touch dry 30 min. Overpainting: after 1 hour.

HARDNESS



BINDER:
Zinc, Solvent based

DEGREE OF GLOSS (DIN 67530 60 °):
matt 0-25 gloss units

HEAT RESISTANCE: +200 °C
STORAGE STABILITY: 60 months

EU VOC-CONTENT: VOC 529,95 g/L

RECOAT: always

SIZE: 250ml, 1L

SALES QTY:
250ml 5 pcs
1L 2 pcs



ZINC COLD GALVANIZED 250 ML, BRUSHABLE
ART. NO. 5410170 BAR CODE 6412490040215

ZINC COLD GALVANIZED 1L, BRUSHABLE
ART. NO. 5410171 BAR CODE 6412490004736

COLOR



DANGER

Information valid at 20°C, relative air humidity 20% - 70%